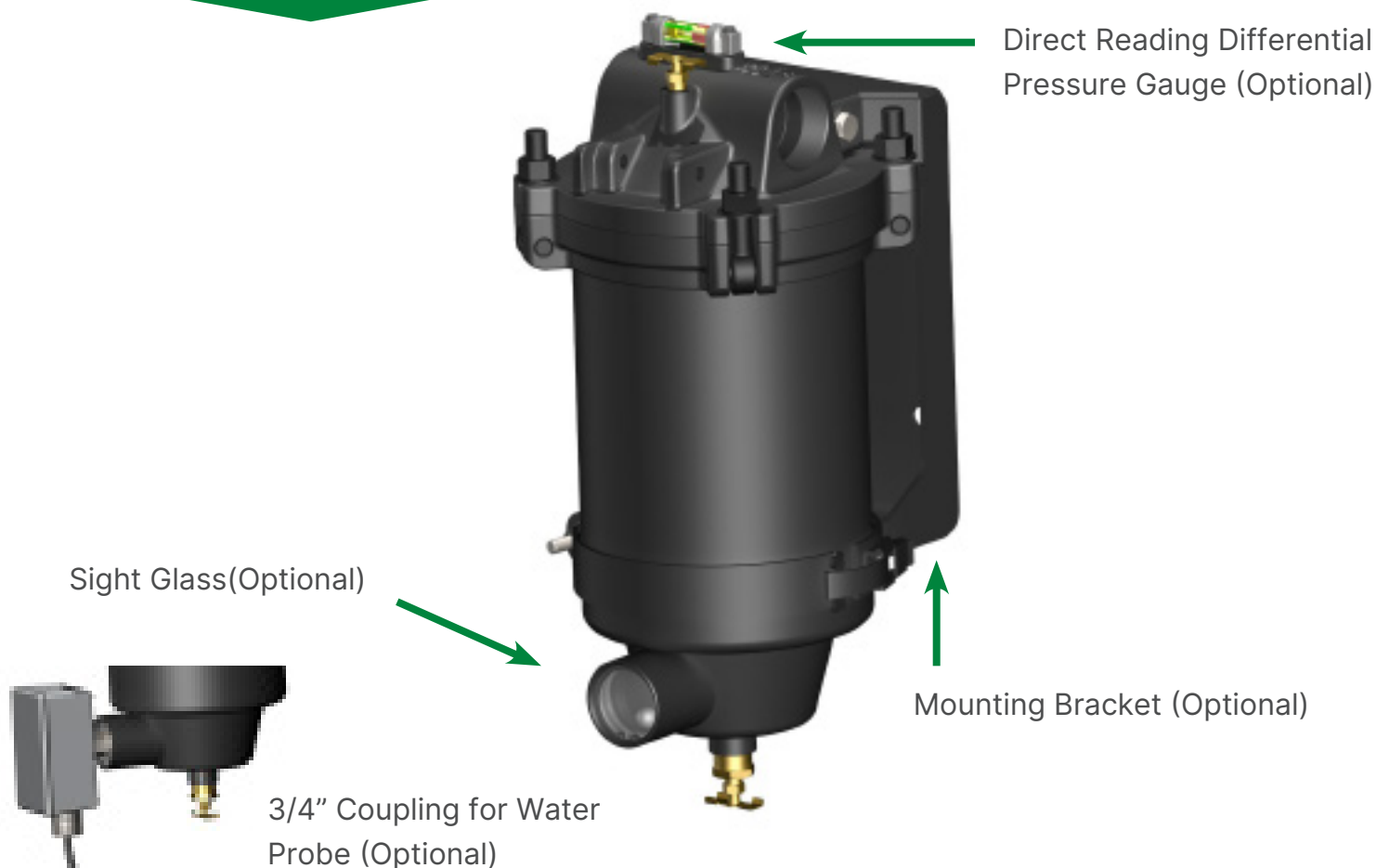


# Facet 21SB/22SB

**LIQUIP**

**VICTORIA**

THE HOME OF **Fuelcraft**



## Facet Multi Purpose Filter Housing

Fuel-Gard VF-21SB/22SB

The Facet VF-21SB & VF-22SB are versatile, compact, economical, light weight housings for superior in-line filtration protection. These housings utilize the same elements as previous Series 21 & 22 housings, but offer the benefit of a quick open swing bolt type close along with a new optional mounting bracket for installation. Depending on the type of cartridge selected, the housing may be used as a filter, absorptive filter, filter separator or air/gas entrainment separator to remove solids, water, mist or hydrocarbon carryover.

**CAUTION:** FULL FLOW MONITORS ARE NOT FOR USE IN FUEL CONTAINING ANTI-ICING ADDITIVE (FSII, PRIST, DI-EGME). THIS INCLUDES PRE-MIXED AND MILITARY FUELS CONTAINING THIS ADDITIVE.

## Common Applications

- ▶ Jet Fuel
- ▶ Avgas
- ▶ Gasoline
- ▶ Diesel
- ▶ Bio-Diesel
- ▶ Lube Oil
- ▶ Insulating Oil
- ▶ Hydraulic Oil
- ▶ Transformer Oil
- ▶ Solvents
- ▶ Compressed Air
- ▶ LNG

## Standard Housing Design

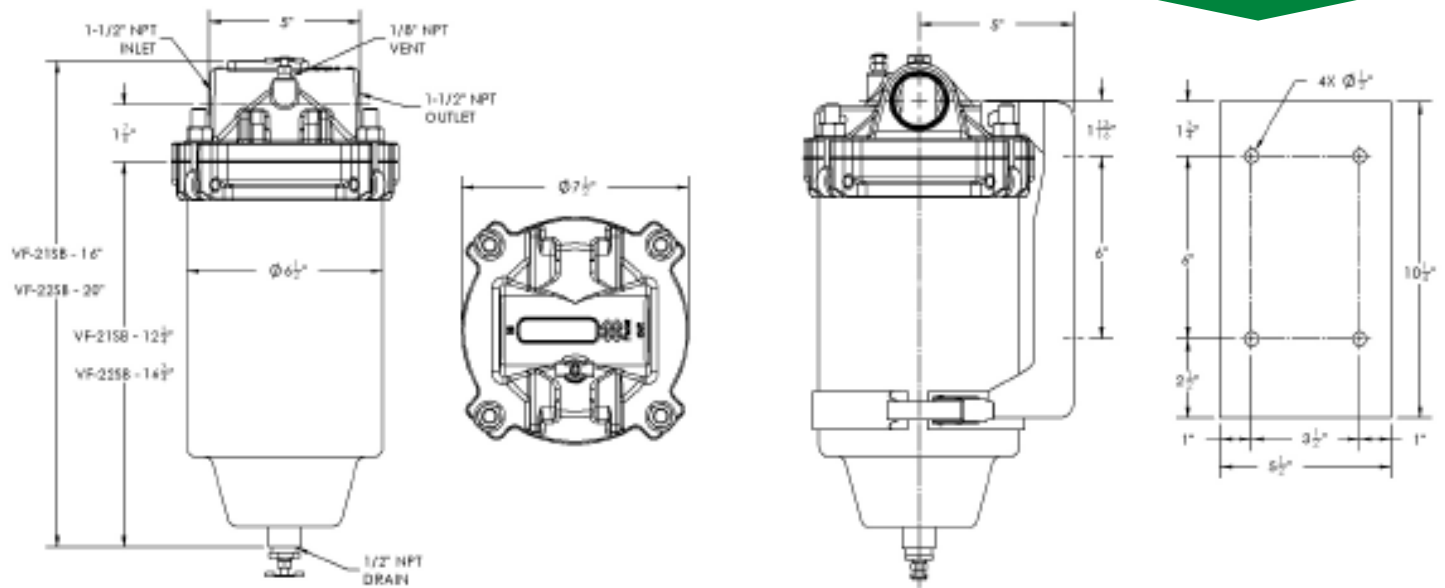
- ▶ Carbon steel body
- ▶ Aluminum head
- ▶ Epoxy coated internally and externally
- ▶ 150 psi (10.5 kg/cm<sup>2</sup>) design pressure
- ▶ Swing bolt quick open closure
- ▶ Buna-N o-ring closure gasket
- ▶ Vent and drain connections w/brass petcocks provided
- ▶ 1-1/2" NPT inlet and outlet connections

## Vessel Options

VF-21SB	Housing only
VF-21SB-PG	Housing w/Direct Reading Differential Pressure
VF-21SB-PGS	Housing w/ Direct Reading Differential Pressure Gauge & Sight Glass
VF-21SB-PGWP	Housing w/ Direct Reading Differential Pressure Gauge & 3/4" Coupling for Water Probe
VF-21SB-S	Housing w/Sight Glass
VF-21SB-WP	Housing w/ 3/4" Coupling for Water Probe
VF-22SB	Housing Only
VF-22SB-PG	Housing w/ Direct Reading Differential Pressure Gauge
VF-22SB-PGS	Housing w/ Direct Reading Differential Pressure Gauge & Sight Glass
VF-22SB-PGWP	Housing w/ Direct Reading Differential Pressure Gauge & 3/4" Coupling for Water Probe
VF-22SB-S	Housing w/Sight Glass
VF-22SB-WP	Housing w/ 3/4" Coupling for Water Probe
644160	Mounting Bracket
644964	Grounding Cable

**Differential Pressure Gauge-** The piston-type differential pressure gauge provides a simple visual warning. When 15 psi differential pressure is reached, the gauge indicator moves from green to red zone. This warning will prevent premature cartridge change-out

**Water Sight Glass-** The water sight glass provides an easy means to detect water in the sump. The weighted ball, visible in the sight glass, will float only when water is present. The floating ball is an indication water should be drained from the housing to prevent both cartridge contamination and water traveling downstream from the housing.



Housing	Cartridge Type & Model	Micron	Flow Rate (GPM)			Flow Rate (scfm)					
*VF-21SB	Filter		Gasoline	Jet Fuel	Diesel	Air/Gas					
	CF-609-2PLO	2	45	45	45						
	CF-609-5PLO	5	45	45	45						
	CF-609-10PLO	10	45	45	45						
	CF-609-25PLO	25	45	45	45						
	Coalescer Separator or Air/Gas Separator					psi	25	50	75	100	150
	CC-21-7	1	45	35	23		95	120	135	155	180
	CC-21B	5	45	35	23		95	120	135	155	180
	CC-21C	25	45	35	23		95	120	135	155	180
	Monitor (Absorptive)										
	FG-O-609-2	1	45	36	18						
	GNG-609-5PL	5	45	36	18						
	GNG-609-25PL	25	45	36	18						
*VF-22SB	Filter		Gasoline	Jet Fuel	Diesel						
	CF-612-2PLO	2	60	60	60						
	CF-612-5PLO	5	60	60	60						
	CF-612-10PLO	10	60	60	60						
	CF-612-25PLO	25	60	60	60						
	Coalescer Separator or Air/Gas Separator					psi	25	50	75	100	150
	CC-22-7	1	60	50	30		143	180	203	233	270
	CC-22B	5	60	50	30		143	180	203	233	270
	CC-22C	25	60	50	30		143	180	203	233	270
	Monitor (Absorptive)										
	FG-O-612-2	0.5	60	50	25						
	GNG-612-5PL	5	60	50	25						
	GNG-612-25PL	25	60	50	25						

**\*VESSEL ACCESSORIES AVAILABLE- SEE VESSEL OPTIONS**