

Single Plane Flanged Swivels - SJF Series

Liquip offers a range of straight swivel joints for the fabrication of loading arms and pipe work requiring up to 360° rotation. The SJF101L swivels are also commonly used in Aviation hydrant cart systems.

Liquip swivels offer exceptional performance and reduced downtime and maintenance.



Key Features

- Cost-effective way of achieving a rotating joint, for loading arms or machinery.
- Heavy-duty stainless steel construction.
- Incorporates the well-known high load, low wear Liquip principle of ball with needle bearing combination, used in Liquip’s extensive range of loading arms like the LBM800 loading arm.
- Purpose designed primary face seal and multiple o-rings which isolate the bearing pack for added safety.
- 4” TTMA flange to suit industry standard installations.
- The greasing system also includes the Liquip trade-mark of a pressure relief outlet to ensure correct lubrication, by ejecting old grease and particles that can cause wear (non standard option).
- Standard grease is suitable for aviation requirements use and has a high chemical compatibility.

Ordering Information

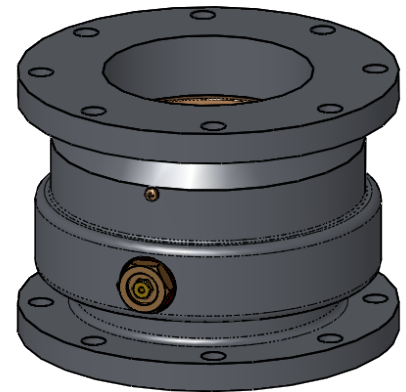
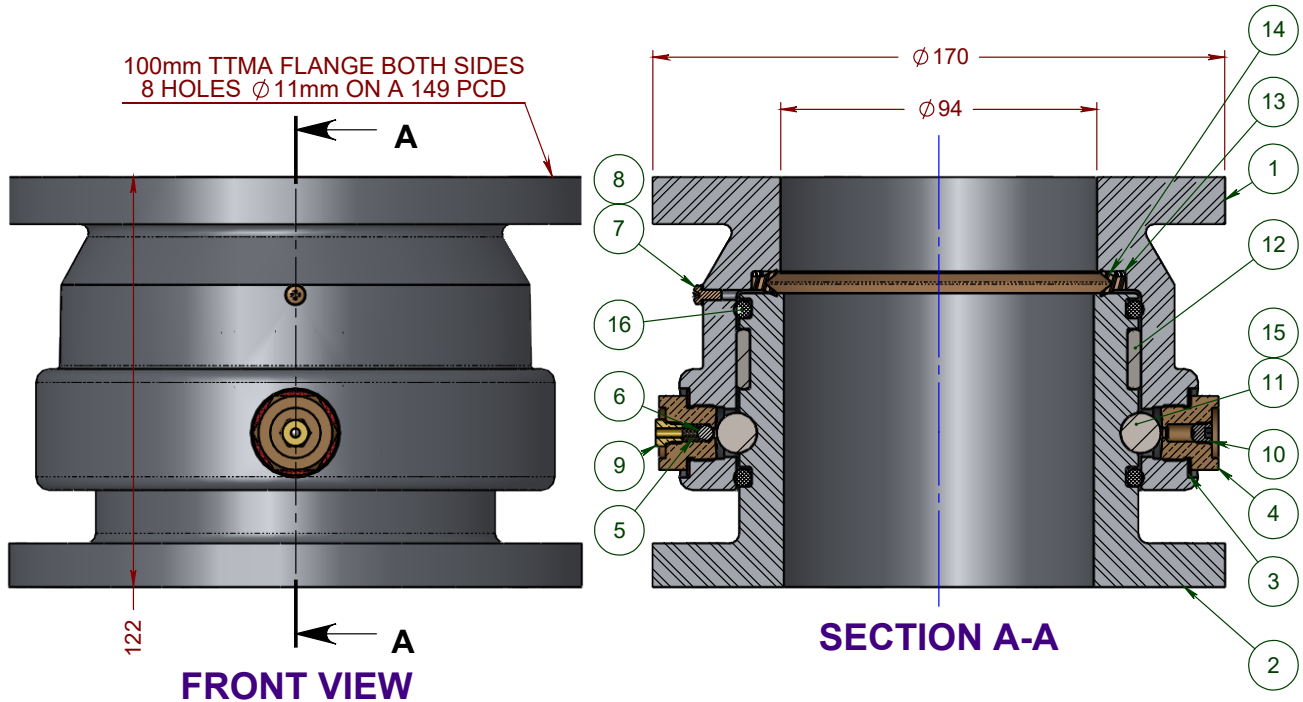
- SJF101L** Stainless Steel Flanged Swivel Joint – 100mm TTMA Flanges, Viton Main Seal
SJF101T Stainless Steel Flanged Swivel Joint – 100mm TTMA Flanges, Teflon Main Seal

Specifications

Materials	Bodies - Stainless steel 316L.
Seals	Viton™ (SJF101L) Teflon™ (SJF101T)
Design Pressure	900 kPa.
Test Pressure	1500 kPa.
Weight	9 kg.
Mounting	4” TTMA. Using M10 bolts or studs. For high load applications high tensile bolts or studs must be used. If the unit is mounted vertically, the female component must be fitted on top to prevent water and dust ingress.
Adjustment	Re-grease at maximum six-month intervals dependent on service conditions.



SJF101x 4" TTMA FLANGED SWIVEL



ITEM NO.	PART NUMBER	DESCRIPTION	SJF101L	MATERIAL
1	SJF101L-1	SWIVEL FEMALE 100mm	1	ST STEEL
2	SJF101L-2	SWIVEL MALE 100mm	1	ST STEEL
3	0885	WASHER FIBRE	2	FIBRE
4	SJW100-3	BALL RETAINER PLUG	2	BRASS
5	4480	SPRING COMPRESSION	1	ST STEEL
6	7822	BALL BEARING 3/16"	1	ST STEEL
7	4926	SCREW METRIC	1	STEEL
8	5263	WASHER FIBRE MET	1	FIBRE
9	6688	SCREW RETAINING	1	BRASS
10	6696	GRUBSCREW CUP POINT	1	ST STEEL
11	2334	BALL BEARING	30	STEEL
12	4531	NEEDLE ROLLER	90	STEEL
13	7576	WEAR RING TO SUIT 7575 SEAL	1	TEFLON
14	7575	LIP SEAL	1	VITON B70
15	7815	GREASE MOLYKOTE (AVIATION)	1	GREASE
16	0126VG	O-RING	2	VITON GFLT