

# API710 Series Dry Break Couplers

The API700 series of couplers is the third generation of Liquip manufactured API couplers, it provides an effortless automatic connection for a safe and environmentally friendly transfer of product from the loading rack to the truck. API bottom loading dry-break coupler with automatic latching.

## Key Features

- Unique stainless steel outer collar and new latching mechanism geometry greatly improve service life of coupler
- Automatic latching mechanism and one touch disconnect ensures effortless operation at all times
- Precision machined latch spindles ensure superior latch alignment resulting in fewer drips at disconnection
- Nose seal and inner poppet seals are 2 separate seals therefore high pressure will not extrude inner seal
- Ergonomic loop and ball handle for ease of operation and comfort
- Poppet nose seal is replaceable without removing coupler from service
- Coupler can be disassembled in 2-3 minutes for maintenance
- Viton B70 seals are fitted as standard, Viton GFLT seals in stock. Seal materials to suit a range of other applications available upon request



## Ordering Information

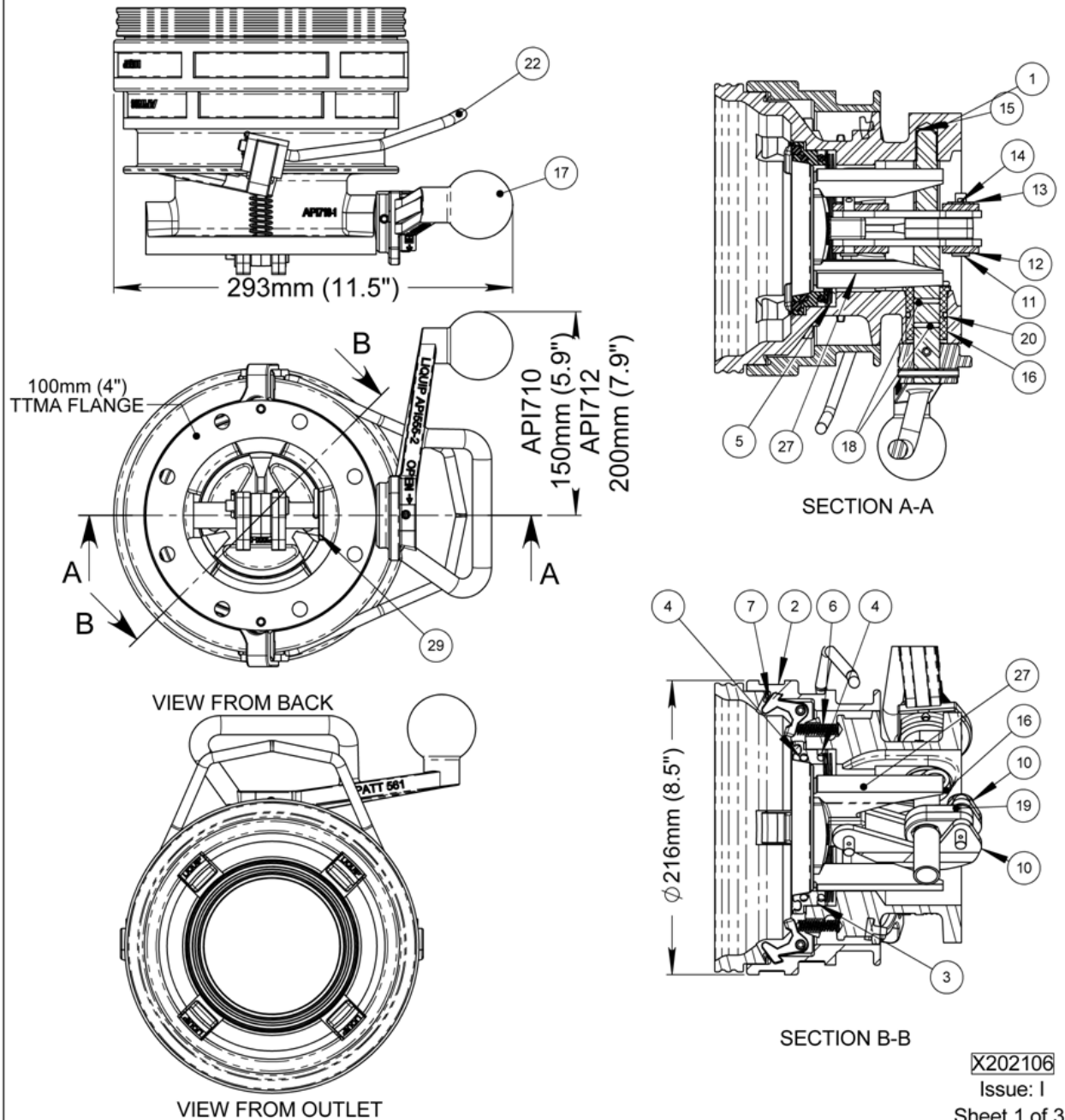
API710	100mm Dry Break Coupler, Short Handle
API712	100mm Dry Break Coupler, Long Handle
API710VG	100mm Dry Break Coupler, Short Handle, Viton GFLT Seals
API712VG	100mm Dry Break Coupler, Long Handle, Viton GFLT Seals

## Specifications

<b>Technical Data</b>	<ul style="list-style-type: none"> <li>• API710 has 150mm long handle, API712 has 200mm long handle</li> <li>• API710VG &amp; API712VG have Viton GFLT seals – recommended for ethanol blends.</li> <li>• Separate spindle on latch, with coil spring actuation, for improved smoothness and consistency.</li> <li>• Chamfered bore and moulded seal in nose for ease of coupling and drip-free operation.</li> <li>• Aluminium bodies, hard anodised for wear resistance.</li> <li>• Cast stainless steel collar</li> <li>• High tensile steel shaft.</li> <li>• Super-tough die-cast and heat-treated stainless steel locking latches.</li> <li>• Viton B70 seals throughout. Viton GFLT available on request.</li> <li>• Replaceable bearings at both ends of shaft for support.</li> <li>• Wave washer as main seal.</li> </ul>
<b>Pressure-to-leak</b>	2500kPa (363 PSI) uncoupled
<b>Testing pressure</b>	1500kPa (218 PSI) uncoupled.
<b>Operating pressure</b>	1000kPa (145 PSI)
<b>Max coupling/uncoupling pressure</b>	550kPa (80 PSI).
<b>Max coupled pressure</b>	2000kPa (290 PSI).
<b>Operating temperature</b>	-20° to +80°C (-4° to +176°F) for Viton B70 seals. -40° to +60°C (-40° to +140°F) for Viton GFLT seals
<b>Weight:</b>	9.2kg (20.3lb)
<b>Mounting</b>	By Industry Standard 100mm (4") TTMA flange. 8 holes Ø11mm on 149mm PCD, 168 outside diameter (Ø7/16" on 5.8" PCD, 6.6" OD) Use spring washers when mounting coupler.
<b>Associated Equipment</b>	Liquip 'Velvet Touch' Loading Arms.

# LIQUIP

## API71x Series Couplers



X202106

Issue: I

Sheet 1 of 3

METERS - VALVES - VENTS - MANHOLES - PUMPS - HOSEREELS - OVERFILL PROTECTION - LOADING ARMS - ELECTRONIC DIPSTICKS

# LIQUIP

## API71x Series Couplers

ITEM	PART No.	DESCRIPTION	API710	API712	API710VG	API712VG	MATERIAL
1	API710-1	BODY API710 COUPLER	1	1	1	1	ALUMINIUM
2	API700-3	OUTER BODY (COLLAR)	1	1	1	1	ST STEEL
3	API710-11	POPPET ADAPTOR RING	1	1	1	1	ALUMINIUM
4	0203	O-RING	2	2	-	-	VITON B70
4	0203VG	O-RING	-	-	2	2	VITON GFLT
5	4449	SPRING SPIRAWAVE	1	1	1	1	SPRING STEEL
6	6171	SPRING COMPRESSION	4	4	4	4	ST STEEL
7	API725-4	LATCH COLLAR INTERLOCK	4	4	4	4	ST STEEL
8	0927	SPRING (SELLOK) PIN	4	4	4	4	Z/P STEEL
9	API555-9	SPACER TUBE TO SUIT 4"	1	1	1	1	ST STEEL
10	API700-15	CAMPLATE	4	4	4	4	BISPLATE 80
11	6736	CLEVIS PIN	2	2	2	2	STEEL
12	5351	WASHER FLAT THIN	2	2	2	2	ST STEEL
13	0101	WASHER FLAT	2	2	2	2	Z/P STEEL
14	0762	SPLIT COTTER PIN	4	4	4	4	ST STEEL
15	2698	TETRATAPE BEARING TO SUIT	1	1	1	1	TEFLON
16	API513-6	BUSH BEARING	1	1	1	1	ACETAL
17	API555-2	HANDLE OPERATING - STANDARD	1	-	1	-	ALUMINIUM
17	API700-2	HANDLE/SHAFT SUB-ASSY - LONG STYLE	-	1	-	1	ALUMINIUM
18	0235	O-RING	2	2	-	-	VITON B70
18	0235VG	O-RING (BS206)	-	-	2	2	VITON GFLT
19	API513-7	CAM ECCENTRIC	1	1	1	1	ST STEEL
20	4574VG	O-RING	1	1	1	1	VITON GFLT
21	0945	R-CLIP TO SUIT API450 SERIES	1	1	1	1	ST STEEL
22	API555-6	HANDLE - OUTER BODY RING	1	1	1	1	ST STEEL
23	API555-10	LEVER OUTER BODY	1	1	1	1	ALUMINIUM
24	API555-7	PIN - SPRING RETURN	2	2	2	2	ST STEEL
25	0093	E-CLIP IMPERIAL	2	2	2	2	ST STEEL
26	4497	SPRING - RETURN	2	2	2	2	SPRING STEEL
27	API555-5H	POPPET TO SUIT 4"	1	1	1	1	ALUMINIUM
28	4602VB	SEAL PRODUCT	1	1	-	-	VITON B70
29	5352	SHIM WASHER	1	1	1	1	ST STEEL
30	7476	INSTRUCTIONS	-	1	1	1	PAPER
31	7486	DATASHEET	-	1	1	1	PAPER
32	4602VG	SEAL PRODUCT	-	-	1	1	VITON GFLT

X202106

Sheet 2 of 3

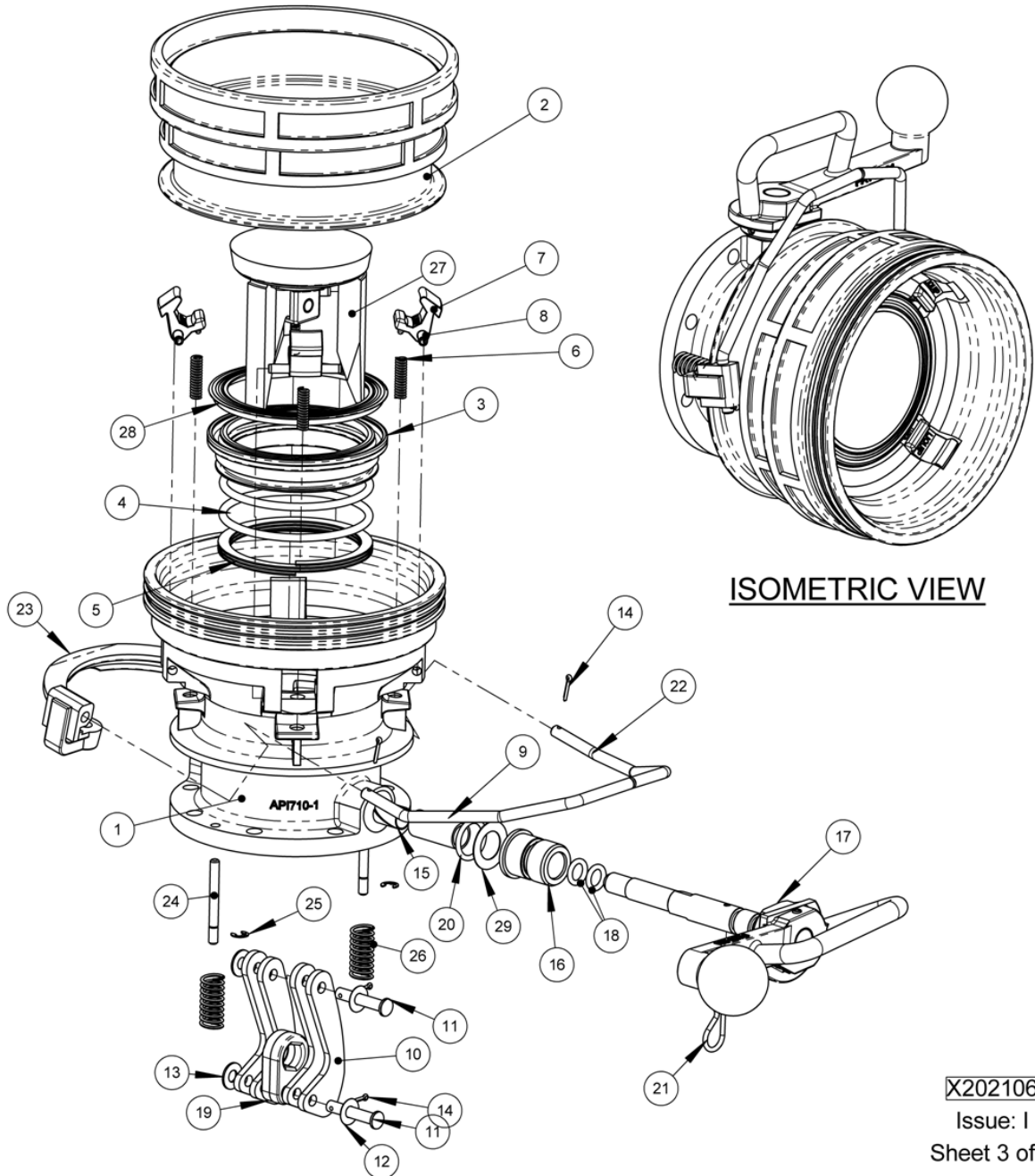
Issue: I

METERS - VALVES - VENTS - MANHOLES - PUMPS - HOSEREELS - OVERFILL PROTECTION - LOADING ARMS - ELECTRONIC DIPSTICKS



# LIQUIP

## API71x Series Couplers



METERS - VALVES - VENTS - MANHOLES - PUMPS - HOSEREELS - OVERFILL PROTECTION - LOADING ARMS - ELECTRONIC DIPSTICKS