

AVIATION HOSE REEL - CARTWHEEL STYLE

Liquip offers a range of cartwheel style hose reels suitable for aviation fuels.

Cartwheel style hose reels are a convenient method of storing a quantity of fuel delivery hose. When the fill point is located at varying locations the required length of hose can be dispensed and rewound by hydraulic or manual means.

Ordering Information

- **AHR250A Hose Reels:** suit hose outside diameters from 86mm to 110mm.
- **AHR250B Hose Reels:** suit hose outside diameters from 56mm to 85mm.
- **AHR250C Hose Reels:** suit hose outside diameters from 25mm to 55mm.
- **Hose Sizes:** 1", 1¼", 1½", 2" & 2 ½" nominal bore.
- **Rewind Type:** Manual or hydraulic.
- **Cartwheel Lining:** Recommended for hoses with wear beads.



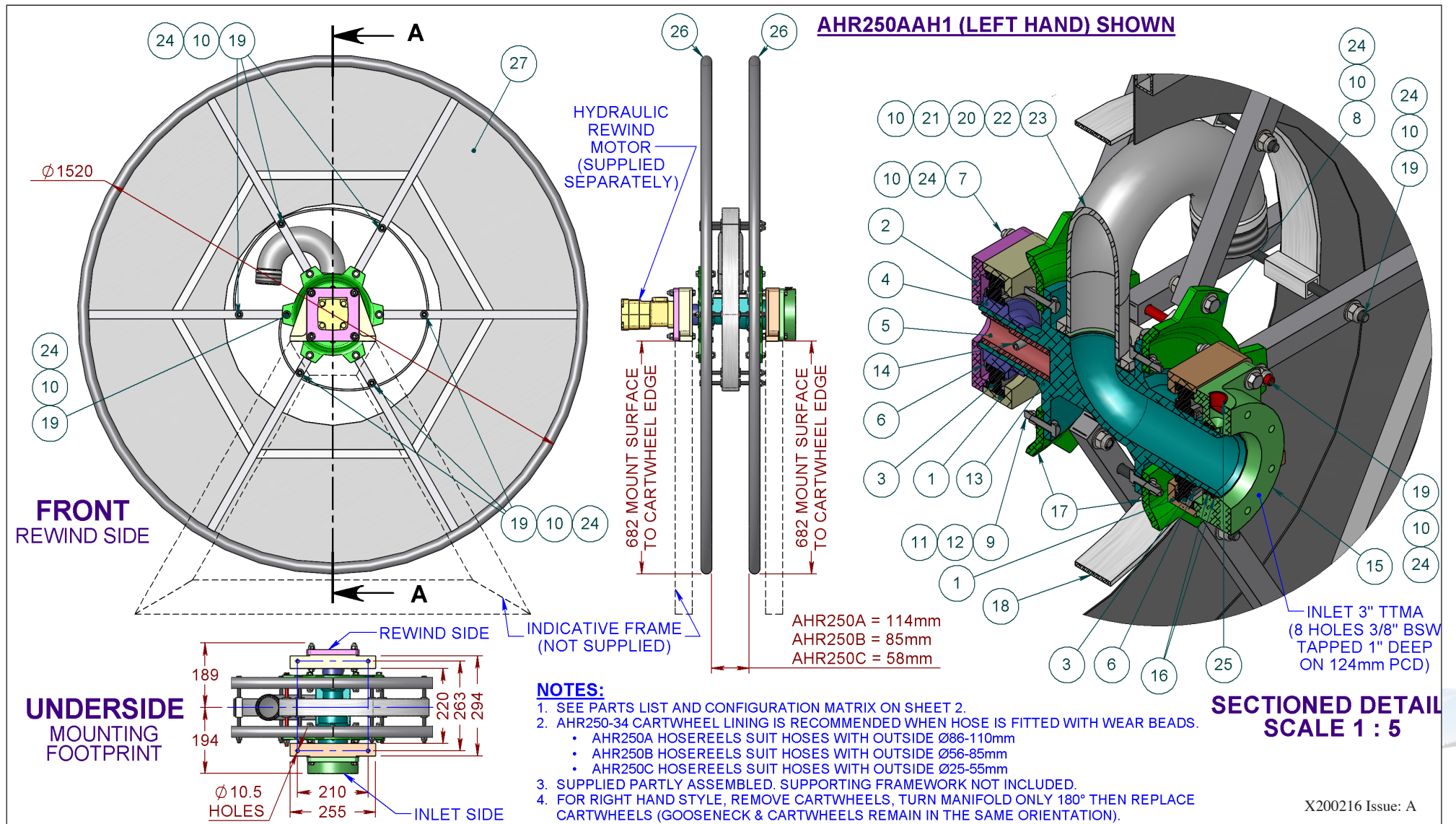
AHR250A SERIES
 Cartwheel Hose Reel
 model shown

Associated Equipment

- **Drum Type Aviation Hose Reels:** AHR250D
- **Recommended Hose:** Elaflex aviation in sizes shown above.
- **Hose End Couplings:** Spannloc or Spannfix.
- **Nozzles:** OPW 295 Series Aircraft Nozzles, AVN nozzles, F116 underwing and 114AVN overwing nozzles.

Specifications

Operation	<p>Just un-hook nozzle and dispense hose to the required location.</p> <p>To rewind the hose a hydraulic motor is used (supplied separately). Rewinding can also be done by rotating the outer rim.</p> <p>The hose nozzle storage (supplied separately) can be fitted with interlocks to help prevent drive-away accidents and product spills.</p> <p>Support frame not supplied (see following page for mounting dimensions).</p>
Mounting	<p>Inlet flange is to suit 75mm (3") TTMA – 8 off 3/8" BSW x 25mm deep blind threads on a 124mm PCD.</p> <p>Inlet can be positioned on either side of the Hose Reel.</p>
Pressure Rating	2,100 kPa.
Periodic Service	Annually remove and repack bearing on the inlet side of the reel.
Dismantle	None Required.
Materials	<p>Aluminium cartwheels, drum and manifold.</p> <p>Nickel Plated Steel Gooseneck.</p> <p>Viton Seals.</p>
Weight	37 kg.



ITEM	PART No.	DESCRIPTION	MATERIAL	AHR250A	AHR250B	AHR250C
1	AHR250-2	HOUSING BEARING	ALUMINIUM	2	2	2
2	AHR250-13	MOUNTING PLATE	ALUMINIUM	1	1	1
3	5715	BALL BEARING DEEP GROOVE	STEEL	2	2	2
4	AHR250-19	ADAPTOR BEARING	ALUMINIUM	1	1	1
5	AHR250-11	ADAPTING BUSH	STEEL	1	1	1
6	4585	CIRCLIP EXTERNAL METRIC	STEEL	2	2	2
7	0031	BOLT HEX HD IMP	Z/P STEEL	8	8	8
8	0064	BOLT HEX	Z/P STEEL	10	10	10
9	0056	BOLT HEX HD IMP	Z/P STEEL	12	12	12
10	0102	WASHER FLAT	Z/P STEEL	54	54	54
11	0101	WASHER FLAT	Z/P STEEL	24	24	24
12	0149	NUT NYLOC	Z/P STEEL	12	12	12
13	AHR250-1	MANIFOLD	ALUMINIUM	1	1	1
14	6676	SPRING (ROLL) PIN	Z/P STEEL	1	1	1
15	AHR250-3	SEAL HOUSING	ALUMINIUM	1	1	1
16	0127	O-RING	VITON A	2	2	2
17	AHR250-8	CHEEK PLATE - OFFSET	ALUMINIUM	2	-	2
	AHR250-5	CHEEK PLATE - FLAT	ALUMINIUM	-	2	-
18	AHR250-39C	SNAIL DRUM - CARTWHEEL	ALUMINIUM	1	1	1
19	AHR250-36	BOLT SPECIAL	Z/P STEEL	1	-	-
	AHR250-35	BOLT SPECIAL	Z/P STEEL	6	1	-
	4907	BOLT IMPERIAL	Z/P STEEL	-	6	1
	0059	BOLT IMPERIAL	Z/P STEEL	-	-	6
20	0022	SETSCREW HEX HD	Z/P STEEL	4	4	4
21	0109	WASHER SPRING	Z/P STEEL	4	4	4
22	4281	GASKET - GOOSENECK	KLINGERITE	1	1	1
23	AHR250-6	GOOSENECK 2-½" BSPP	N/P STEEL	1	-	-
	AHR250-6-50	GOOSENECK 2" BSPP	N/P STEEL	-	1	-
	AHR250-6-38	GOOSENECK 1-½" BSPP	N/P STEEL	-	-	1
24	0150	NUT NYLOC	Z/P STEEL	25	25	25
25	1316	CAP/PLUG	PVC RED	1	1	1
26	AHR250-9	CARTWHEEL SUB ASSEMBLY	ALUMINIUM	2	2	2
27	AHR250-34	LINING - CARTWHEEL (OPTIONAL)	ALUMINIUM	4	4	4

NOTES:

- AHR250-34 CARTWHEEL LINING IS RECOMMENDED WHEN HOSE IS FITTED WITH WEAR BEADS.
 - AHR250A HOSEREELS WILL ACCEPT 2" & 2-½" HOSES WITH WEAR BEADS.
 - AHR250B HOSEREELS WILL ACCEPT 1-¼" & 1-½" HOSES WITH WEAR BEADS AND 2" & 2-½" HOSES WITHOUT WEAR BEADS.
 - AHR250C HOSEREELS WILL ACCEPT 1-¼" & 1-½" HOSES WITHOUT WEAR BEADS.
- FOR HYDRAULIC REWIND, MOTOR (PART 1295) IS SUPPLIED SEPARATELY.
- FOR AHR250C HOSEREELS REDUCING NIPPLE IS SUPPLIED AS REQUIRED. 1-½" BSP, 1-¼" BSP OR 1" BSP.

OPTIONS ASSEMBLY NUMBERS	HOSE SIZES (OD)			GOOSENECK			REWIND DRIVE		OPTIONAL AHR250-34 LINING (1)
	Ø86- 110mm (A)	Ø56- 85mm (B)	Ø25- 55mm (C)	63mm (A)	50mm (B)	38mm (C)	MANUAL (M)	HYDRAULIC (H)	
AHR250AAM1	✓			✓			✓		✓
AHR250AAH1	✓			✓				✓	✓
AHR250ABM1	✓				✓		✓		✓
AHR250ABH1	✓				✓			✓	✓
AHR250BAM		✓		✓			✓		
AHR250BAH		✓		✓				✓	
AHR250BBM		✓			✓		✓		
AHR250BBH		✓			✓			✓	
AHR250BCM1		✓				✓	✓		✓
AHR250BCH1		✓				✓		✓	✓
AHR250CCM			✓			✓	✓		
AHR250CCH			✓			✓		✓	

