

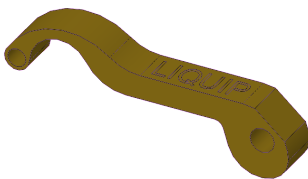
LEVER, PINS & SEAL REPLACEMENTS FOR CAMLOCKS

Liquip camlocks are built to NATO specification (Superceded by A-A-59326) and are of aluminium construction.

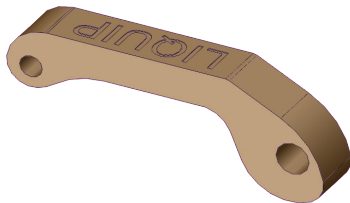
Camlock levers, pins and seals are common spare parts.

Below is a list of common spares that are available through Liquip.

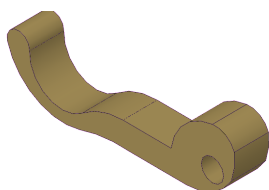
LEVERS



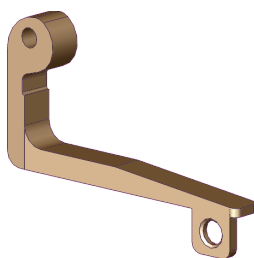
Item	Desc	Suits
5655	Large Lever Camlock Brass (Liquip branded)	<ul style="list-style-type: none"> • 3" Camlocks • 4" Camlocks



Item	Desc	Suits
CLC3.0-2	Medium Lever Camlock Brass (Liquip branded)	<ul style="list-style-type: none"> • API-DC • API-MC4x • API-MC3x • API-MC80 • API-MC100 • APIRC • VCF500



Item	Desc	Suits
5656	Small Lever Camlock Brass	<ul style="list-style-type: none"> • 1¼" to 2½" camlocks (32 to 65mm)

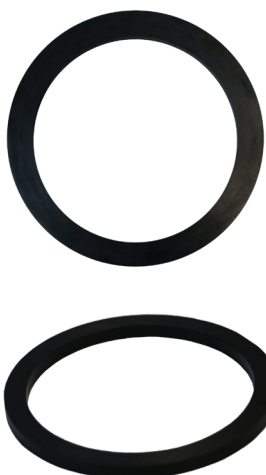


Item	Desc	Suits
7199	Locking camlever, Brass	API-DCL Only fits on API (6") size Use API-DCLA (single lever)



LEVER, PINS & SEAL REPLACEMENTS FOR CAMLOCKS

SEALS



Item	Material	Size	Suits
0373	Nitrile	¾" NATO	NA20
0374	Nitrile	1" NATO	NA25
0375	Nitrile	1¼" NATO	NA32
0376	Nitrile	1½" NATO	NA40
0378	Nitrile	2" NATO	NA50
0380	Nitrile	2½" NATO	NA65
0383	Viton A	3"	TM3AT
0429	Nitrile	3"	NA80-2AT/TM3AT
0433	H.A.N	4"	
0249	Nitrile	4" API	API CAMLOCKS
0250	Viton A	4" API	API CAMLOCKS
0377	Nitrile	6" NATO	API

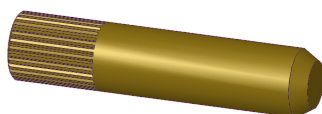
PINS



Item	Desc	Suits
API-DC-3	Long pin, brass Ø5/16" (8mm) x 57mm	<ul style="list-style-type: none"> • API-DC • API-MC4x • API-MC3x • API RC



Item	Desc	Suits
5653	Medium pin, Stainless steel Ø1/4" (6mm) x 34mm	<ul style="list-style-type: none"> • 1¼" to 2½" camlocks (32 to 65mm)



Item	Desc	Suits
CLC3.0-3	Medium pin, brass Ø5/16" (8mm) x 38mm	<ul style="list-style-type: none"> • All 3" & 4" Camlocks • API-MC80 • API-MC100

